

VGHS AD 2.16 HELICOPTER LANDING AREA

As directed by ATC

VGHS AD 2.17 AIR TRAFFIC SERVICES AIRSPACE

1	Designation	Dhaka Control Zone
	Lateral limits	A circle of 25 NM radius centered at Dhaka VOR (234927.42N 0902446.52E) except that portion which falls north of the straight line joining points 241147N 0903550E and 241147N 0901350E
2	Vertical limits	GND to FL055
3	Airspace Classification	C
4	ATS Unit call sign	Dhaka Tower
	Language	English
5	Transition altitude	4000 FT AMSL
6	Remarks	Nil

1	Designation	Aerodrome Traffic Zone (ATZ)
	Lateral limits	ATZ is oval shaped area joining outer tangents of 5NM (9KM) radius circles centered at the RWY centre and both ends of RWY
2	Vertical limits	4000 FT
3	Airspace Classification	C
4	ATS Unit call sign	Dhaka Tower
	Language	English
5	Transition altitude	4000 FT AMSL
6	Remarks	Nil

VGHS AD 2.18 AIR TRAFFIC SERVICES COMMUNICATIONS FACILITIES

Service Designator	Call sign	Frequency	Hours of operation	Remarks
1	2	3	4	5
Dhaka Area control centre (ACC)	Dhaka control	125.7 MHz	FM 1400 to 0200 UTC (next day)	EMERG FREQ 121.5MHz
Dhaka ACC (Upper)	Dhaka control	PRI 125.7 MHz SRY 129.7 MHz	FM 0200 to 1400 UTC	FL285 TO FL460
Dhaka ACC (Lower)	Dhaka control	PRI 126.7 MHz SRY 130.7 MHz	FM 0200 to 1400 UTC	GND TO FL285
TWR (Aerodrome and Approach Control (Non – Radar)	Dhaka Tower	PRI 118.3 MHz SRY 119.3 MHz	H24	EM: A3
APP (Radar)	Dhaka Approach	PRI 121.3 MHz SRY 120.3 MHz	0130-1700 Daily Except SAT, BTN 0130-0630 AND 1300 – 1700 on SAT.	EMERG FREQ 121.5MHz During OJT (on the job Training) in TWR/APP (Non-radar) or Area control (Non-radar) Radar APP Control services at Hazrat Shahjalal Intl Airport will be limited. However, Radar APP control service may be avbl during OJT on request.
SMC	Dhaka Ground	121.8 MHz	H24	NIL
Air ground	Dhaka Radio	3491 KHz, 6556 KHz, 10066 KHz, 2947 KHz	H24	MWARA (3491,6556,10066)KHz RDARA (2947)KHz EM: A3 coordinate: 235057.20N 0902413.24E
ATIS	Dhaka Information	127.4 MHz	H24	Nil

VGSY AD 2.9 SURFACE MOVEMENT GUIDANCE, CONTROL SYSTEM AND MARKINGS

1	Stand identification/taxiway guidelines/ visual docking/parking guidance	Taxiing guidance signs at intersection with TWY and RWY. Guidance at apron: Nose-in guidance at aircraft stands. - Due to parking and maneuvering problem, all ACFT with wing-span more than 80ft operating to/fm Osmani International Airport are required to have tow bar for pushback.
2	RWY and TWY markings and LGT	RWY marking aids: THR, Centre line, RWY designator all runways, Touchdown zone marking. TWY marking aids: TWY centerline, RWY Holding Position
3	Stop bars	NIL
4	Remarks	NIL

VGSY AD 2.10 AERODROME OBSTACLES

SL Nr	Name of the significant obstacles/obstructions	Co-ordinates of the Obstacle	True Bearing FM REF point	Dist FM REF Point (m)	Elevation AMSL (FT)
1	DVOR	245747.70N 0915142.30E	283.20	1019	90 Ft
2	Control Tower	245731.68N 0915215.00E	197.39	278	100 Ft
3	Light Mast-01	245727.18N 0915216.74E	184.64	407	150 Ft
4	Light Mast-02	245726.16N 0915219.02E	175.77	426	150 Ft
5	Light Mast-05	245733.06N 0915209.60E	227.07	315	170 Ft
6	Grand Sylhet (building)	245717.70N 0915141.28E	236.15	1241	195 Ft.
7	Mobile Antenna Tower	245707.92N 0915151.42E	216.88	1241	200 Ft
8	TV Mast	Coordinate N/A	180	17594	445 Ft
9	Chimney	245815.84N 0915136.48E	313.44	1593	170 Ft
10	Jalalabad GAS Transmission building	245302.22N 0915249.08E	174	8619	200 Ft
11	Kailastila Gas Field	245208.28N 0920128.02E	124	18521	236 Ft

VGSY AD 2.11 METEOROLOGICAL INFORMATION PROVIDED

1	Associated MET office	Osmani Int'l Airport Sylhet (VGSY)
2	Hours of service	HO
3	Office responsible for TAF preparation Periods of validity (hours)	Hazrat Shahjalal Int'l (VGHS) 6
4	Type of landing forecast Interval of issuance	--
5	Briefing/consultation provided	Provided at VGHS
6	Flight documentation Languages used	C, PL English
7	Charts and other information available for briefing or consultation	--
8	Supplementary equipment available for providing information	--
9	ATS units provided with information	TWR
10	Additional information	Tel: NIL

VGSY AD 2.12 RUNWAY PHYSICAL CHARACTERISTICS

Designator RWY NR	TRUE & MAG BRG	Dimensions of RWY (m)	Strength (PCN) and surface of RWY & SWY	THR Coordinates	THR elevation (FT)	Slope of RWY- SWY
1	2	3	4	5	6	7
11	114 ⁰ True	3125X45	PCN 70/F/C/X/T Bituminous Concrete	245809.2N 0915104.3E	50	0.16 %
29	294 ⁰ True	3125X45		245730.7N 0915244.2E	50	0.16 %

Designator RWY NR	SWY Dimensions (m)	CWY Dimensions(m)	Strip Dimensions (m)	RESA(m)	OFZ	Remarks
8	9	10	11	12	13	14
11	Nil	275 X 150	3312 X 300	90x90	within the clearway	NIL
29	67 X 45	905 X 150	3312 X 300	90x90	within the clearway	

VGSY AD 2.13 DECLARED DISTANCES

RWY	TORA (m)	TODA (m)	ASDA (m)	LDA (m)	REMARKS
1	2	3	4	5	6
11	3125	3400	3192	3125	NIL
29	3125	4030	3220	3035	Due displaced threshold

VGSY AD 2.14 APPROACH AND RUNWAY LIGHTING

RWY Designator	APCH	THR	VASIS PAPI	TDZ	RWY centre line	RWY edge	END & WBAR	STW LGT	Remarks
1	2	3	4	5	6	7	8	9	10
11	Precision approach lighting system (CAT-1)	Six Green LGT	3 ⁰ PAPI	NIL	NIL	60 m apart lights intensity	AVBL	NIL	
29	Simple approach lighting system	Six Green LGT	3 ⁰ PAPI	NIL	NIL	100%, 80 %, 60 %.	AVBL	NIL	

VGSY AD 2.15 OTHER LIGHTING, SECONDARY POWER SUPPLY

1	ABN/ IBN location, characteristics and hours of operation	Nil
2	LDI location and LGT Anemometer location and LGT	Nil Atop control TWR,LGT
3	TWY edge and center line lighting	Edge: AVBL Center line: Nil
4	Secondary power supply switch-over time	During main power supply failure, Automatic standby generator power supply available within 15 seconds.
5	Remarks	Apron lights avbl

VGCB AD 2.1 AERODROME LOCATION INDICATOR AND NAME
VGCB –COX’S BAZAR AIRPORT, COX’S BAZAR.
VGCB AD 2.2 AERODROME GEOGRAFICAL AND ADMINISTRATION DATA

1	ARP coordinates and site at AD	212659.13N 0915753.31E, RWY centre.
2	Distance and direction from city	02 KM from city centre
3	AD elevation/reference temperature	12 FT/ 34 ⁰ C
4	MAG VAR	50’’ W
5	AD administration, address, telephone, telefax ,telex,AFS	Civil Aviation Authority of Bangladesh Postal address: Airport Manager Cox’s Bazar Airport, Cox’s Bazar Bangladesh Telephone : APM : 88- 0341-64479 (Off), 0341-64075 (Res) TWR : 88-0341-62010
6	Types of traffic permitted IFR/VFR	IFR/VFR
7	Remarks	Nil

VGCB AD 2.3 OPERATIONAL HOURS

SL. Nr.	Services	Hours
1	Aerodrome Administration	0900 LT to 1700 LT except FRI& SAT
2	Custom and Immigration	Nil
3	Health and Sanitation	HO
4	AIS briefing office	Nil
5	ATS reporting office (ARO)	HO
6	MET briefing office	HJ
7	Air traffic services	HO
8	Fuelling	Nil
9	Handling	Nil
10	Security	HO
11	De-icing	Nil
12	Remarks	Nil

VGCB AD 2.4 HANDLING SERVICES AND FACILITIES

NIL

VGCB AD 2.5 PASSENGER FACILITIES

1	Hotels	AVBL
2	Restaurant	AVBL
3	Transportation available	Taxi , Microbus, Auto -rickshaws and Rickshaws.
4	Medical facilities	AVBL
5	Banks and Post Office	AVBL
6	Tourist office	AVBL
7	Remarks	Cox's Bazar is the most important tourist spot in Bangladesh and longest sea beach in the world.

VGCB AD 2.6 RESCUE AND FIRE FIGHTING SERVICES

1	AD Category for fire fighting	CAT: 5 AVBL: 5
2	Rescue Equipment	AVBL
3	Disabled Aircraft Removal	Nil
4	Remarks	Nil

VGCB AD 2.7 SEASONAL AVAILABILITY CLEANING

2.7.1 The airport is available for all seasons, Side strips become unusable during monsoon. There is no requirement for clearing.

VGCB AD 2.8 APRONS, TAXIWAYS AND CHECK LOCATIONS DATA

1	Apron surface and strength	Surface: Bituminous Concrete Strength: PCN 63/R/C/W/T
2	Taxiway width, surface and strength	Width:15 M Surface: Bituminous Concrete Strength: PCN 63/R/C/W/T
3	ACL location and elevation	Not designated
4	Remarks	NIL

VGCB AD 2.9 SURFACE MOVEMENT GUIDENCE AND CONTROL SYSTEM AND MARKINGS

1	Stand identification/taxiway guide lines/visual docking/parking guidance	Taxiing guidance signs at all intersections TWY and RWY at all holding positions. Guidelines at apron. Nose- in guidance at aircraft stands.
2	RWY and TWY markings and LGT	RWY marking aids: THR, TDZ, Centre line, RWY designator –all runways. TWY marking aids: TWY holding position, TWY centre line –all TWYs. RWY LGT : AVBL , APP. LGT – AVBL, PAPI LGT- AVBL.
3	Stop bars	NIL
4	Remarks	NIL

VGCB AD 2.10 AERODROME OBSTACLES

1	Obstruction in approach and take-off areas	Obstruction in approach and take-off areas and circling area are shown in instrument approach charts.
2	Obstruction in the circling area and at aerodrome	

VGCB AD 2.11 METEOROLOGICAL INFORMATION PROVIDED

1	Associated MET office	Cox's Bazar (VGCB)
2	Hours of service	HJ
3	Office responsible for TAF preparation Periods of validity (Hours)	Cox's Bazar (VGCB) 6,12
4	Type of landing forecast Interval of issuance (Hours)	½ & Special
5	Briefing/ consultation provided	P
6	Flight documentation languages used	C,PL English
7	Charts and other information available for briefing or consultation	S,U
8	Supplementary equipment available for providing information	
9	ATS units provided with information	TWR
10	Additional information	Tel: 0341-63618

VGCB AD 2.12 RUNWAYS PHYSICAL CHARACTERISTICS

Designator RWY NR	TRUE & MAG BRG	Dimensions of RWY (m)	Strength (PCN) and surface of RWY & SWY	THR Coordinates	THR elevation (FT)	Slope of RWY- SWY
1	2	3	4	5	6	7
17	170 ⁰	2042x38	PCN 51/F/C/W/T Bituminous concrete	212740.75N 0915744.92E	12	NIL
35	350 ⁰	2042x38		212634.78N 0915758.22E	12	
8	9	10	11	12	13	14
Designation RWY NR	SWY dimensions (m)	CWY dimensions (m)	RESA	Strip Dimensions (m)	OFZ	Remarks
17	NIL	150x150	90X76	2222x150	Within the CWY	NIL
35	60x38	300x150	90X76			

VGCB AD 2.13 DECLARED DISTANCES

RWY	TORA(m)	TODA(m)	ASDA(m)	LDA(m)	REMARKS
1	2	3	4	5	6
17	2042	2192	2042	2042	NIL
35	2042	2342	2102	2042	NIL

VGCB AD 2.14 APPROACH AND RUNWAY LIGHTING

AVBL

VGCB AD 2.15 OTHER LIGHTING, SECONDARY POWER SUPPLY

1	ABN/IBN location, characteristics and hours of operation	Nil
2	LDI location and LGT Anemometer location and LGT	NIL Atop control TWR, No.
3	TWY edge and center line lighting	NIL
4	Secondary power supply switch-over time	During main power supply failure, automatic standby generator power supply available within 30 seconds.
5	Remarks	Nil

VGCB AD 2.16 HELICOPTER LANDING AREA

As directed by ATC

VGCB AD 2.17 AIR TRAFFIC SERVICES AIRSPACE

1	Designation	Aerodrome Traffic Zone (ATZ)
	Lateral limits	ATZ is oval shaped area joining outer tangents of 5 NM (9KM) radius circles centered at the RWY centre and both ends of RWY.
2	Vertical limits	4000 ft (AMSL)
3	Airspace	D
4	Unit/Language	Cox's Bazar Tower /English
5	Transition altitude	4000 ft
6	Remarks	Nil

VGSD AD 2.11 METEOROLOGICAL INFORMATION PROVIDED

1	Associated MET office	Saidpur (VGSD)
2	Hours of Service	HO
3	Office responsible for TAF preparation Periods of validity	HAZRAT SHAHJALAL INTL (VGHS) 6
4	Type of landing forecast Interval of issuance	-
5	Briefing/consultation provided	Provided at VGHS
6	Flight documentation Languages used	C PL English
7	Charts and other information avbl for briefing or consultation	-
8	Supplementary equipment avbl for providing information	-
9	ATS units provided with information	TWR
10	Additional information	Tel: Nil

VGSD AD 2.12 RUNWAY PHYSICAL CHARACTERISTICS

Designator RWY NR	TRUE & MAG BRG	Dimensions of RWY (m)	Strength(PCN) and surface of RWY & SWY	THR Coordinates	THR elevation (FT)	Slope of RWY- SWY
1	2	3	4	5	6	7
16	156°	1829 X 30	PCN17/F/C/Y/T Bituminous Concrete	254600.55N 0885420.94E	125	NIL
34	336°			254504.74N 0885443.91E	125	NIL

Designator/ RWY NR	SWY Dimensions (M)	CWY Dimensions (m)	Strip Dimensions (m)	RESA	Remarks
	8	9	10	11	12
16	30X30	180X150	2039X150	90X60	RWY transverse Slope is 1%
34	60X30	210X150	2039X150	90X60	

VGSD 2.13 DECLARED DISTANCES

RWY	TORA (m)	TODA (m)	ASDA(m)	LDA (m)	RESA(m)	Remarks
1	2	3	4	5	6	7
16	1829	2009	1859	1829	90	Due to introduction of RESA
34	1829	2039	1889	1829	90	

VGSD AD 2-14 APPROACH AND RUNWAY LIGHTING

RWY Designator	APCH	THR	PAPI	TDZ	RWY Centre	RWY edge	END & WBAR	STWY	Remarks
1	2	3	4	5	6	7	8	9	10
16	Nil	Six Green LGT	2 BAR PAPI	NIL	NIL	60M apart White omni-directional with fixed intensity	6 Nr Red mom-directional WBAR NIL	NIL	NIL
34	NIL	Six Green LGT	2 BAR PAPI	NIL	NIL	60M apart White omni-directional With fixed intensity	6 Nr Red mom-directional WBAR NIL	NIL	NIL

VGSD AD 2.15 OTHER LIGHTING, SECONDARY POWER SUPPLY

1	AB/IBN location, characteristics and hours of operations	NIL
2	LDI location and LGT Anemometer location and LGT	NIL Atop Control TWR
3	TWY edge and centre line lighting	Edge: Avbl Centre line: Nil
4	Secondary power supply switch-over time	During main power supply failure, automatic standby generator power supply available within 15 seconds
5	Remarks	Apron lights: avbl

VGSD AD 2.16 HELICOPTER LANDING AREA

As directed by ATC

VGSD AD 2.17 AIRTRAFFIC SERVICES AIRSPACE

1	Designation Lateral limits	Aerodrome Traffic Zone (ATZ) ATZ is a oval shaped area joining outer tangents of 5NM (9KM) radius circle centered at the runway centre and both ends of the runway.
2	Vertical limits	4000FT (AMSL)
3	Airspace	D
4	Unit Language	Saidpur Tower English
5	Transition Altitude	4000FT
6	Remarks	NIL

VG TJ AD 2.10 AERODROME OBSTACLES

In approach/TOFF area			
Rwy effected	Obstacle type elevation	Position	LGT
35	Apartment Building 144 FT	East of extended centre line 1244 M FM THR RWY 35	Yes
35	Bashundhara Building 159 FT	1.7 KM on brg 166 ⁰ FM THR RWY-35	Yes
17	Old LOS Mast 325 FT	1 KM on brg 125 ⁰ FM THR RWY-17	Yes

In circling area				
RWY affected	Obstacle type	Position	Marking/ LGT	Remarks
17/35	Bricks structure (Dimension 1650X75FT) 6FT	220 ft offset to the West side of RWY centre line	No	Tejgaon is adjacent to Hazrat Shahjalal International Airport (VGHS). So all the Obstructions at/around Hazrat Shahjalal will be considered as obstacles for Tejgaon (VG TJ).
17/35	Bricks structure (Dimension 1000X60FT) 4FT	220 ft offset to the West side of RWY centre line	No	
17/35	Bricks structure (Dimension 900X60FT) 4FT	220 ft offset to the West side of RWY centre line	No	
17/35	Band stand (Dimension 75X90FT) 28FT	150 ft offset to the East side of RWY centre line	No	
17/35	IDB Bhavan Antenna 325 FT	1200 ft West side of RWY centre line	Yes	

VG TJ AD 2.11 METEOROLOGICAL INFORMATION PROVIDED

2.11.1 Crews may receive weather briefing at Met office located at BAF Base Bashar.

VG TJ AD 2.12 RUNWAY PHYSICAL CHARACTERISTICS

Designator RWY NR	True / Mag BRG	Dimensions of RWY (FT)	Strength (PCN) and surface of RWY & SWY	THR Coordinates	THR Elevation (FT)	Slope of RWY- SWY
			RWY SWY			
1	2	3	4	5	6	7
17	166° T	8000X150	PCN40F/C/Y/T Bituminous Concrete	2347.41N 09022.75E	24 ft	0.06%
35	346° T	8000X150	PCN40F/C/Y/T Bituminous Concrete	2346.01N 09023.17E	24 ft	0.06%
Designator RWY NR	SWY Dimensions(ft)	CWY Dimensions(ft)	Strip Dimensions (ft)	OFZ	Remarks	
	8	9	10	11	12	
17	450x150	450x150	9350X500	Within the CWY	Nil	
35	900x150	900x150	9350X500	Within the CWY	Nil	

VG TJ AD 2.13 DECLARED DISTANCES

RWY	TORA (ft)	TODA (ft)	ASDA(ft)	LDA (ft)	Remarks
1	2	3	4	5	6
17	8000	8450	8450	8000	NIL
35	8000	8900	8900	8000	NIL

First 1000 ft from beginning of RWY 17 & 35 is not usable during landing due to obstacles on the approach funnel. Similarly last 1000 ft of RWY for both 17 & 35 is not usable for T/O due to obstacles on the T/O path.

VG TJ AD 2.14 APPROACH AND RUNWAY LIGHTING

NIL

VG TJ AD 2.15 OTHER LIGHTING, SECONDARY POWER SUPPLY.

NIL

VG TJ AD 2.16 HELICOPTER LANDING AREA

As directed by ATC

VG TJ AD 2.17 AIR TRAFFIC SERVICES, AIRSPACE

1	Designation Lateral limits	Air Traffic control Service Up to 25 NM from DAC VOR BTN R185 and R285 Northern limit 2NM from threshold RWY 17 and towards south and west 5 NM semicircular from centre of runway.
2	Vertical limits	1000FT (AMSL)
3	Airspace	C
4	Unit Language	Tejgaon Tower English
5	Transition Altitude	4000 FT
6	Remarks	Nil.

VG TJ AD 2.18 AIR TRAFFIC SERVICES COMMUNICATION FACILITIES

1	Service designator	Air Traffic control service
2	Call sign	Tejgaon Tower
3	Frequency	123.0MHz (PRY) 122.9 MHz (SRY)
4	Hours of operation	0100 UTC to sunset
5	Remarks	1) Service provided by Bangladesh Air force 2) HF/RT 6826 KHz for coordination.

**AIP
BANGLADESH**

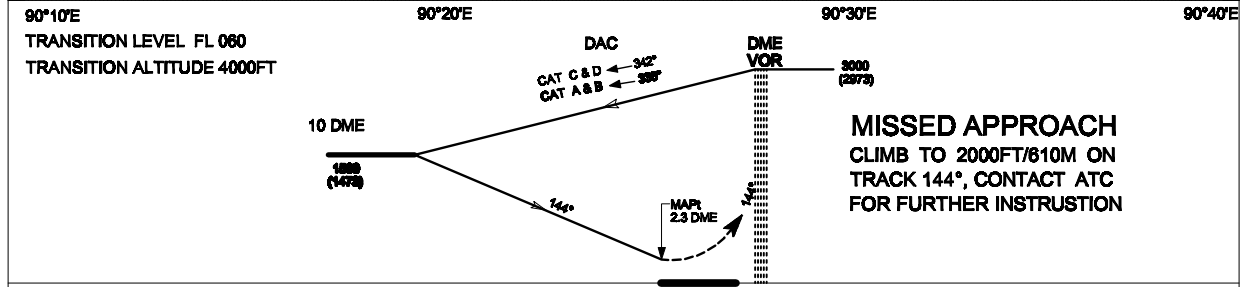
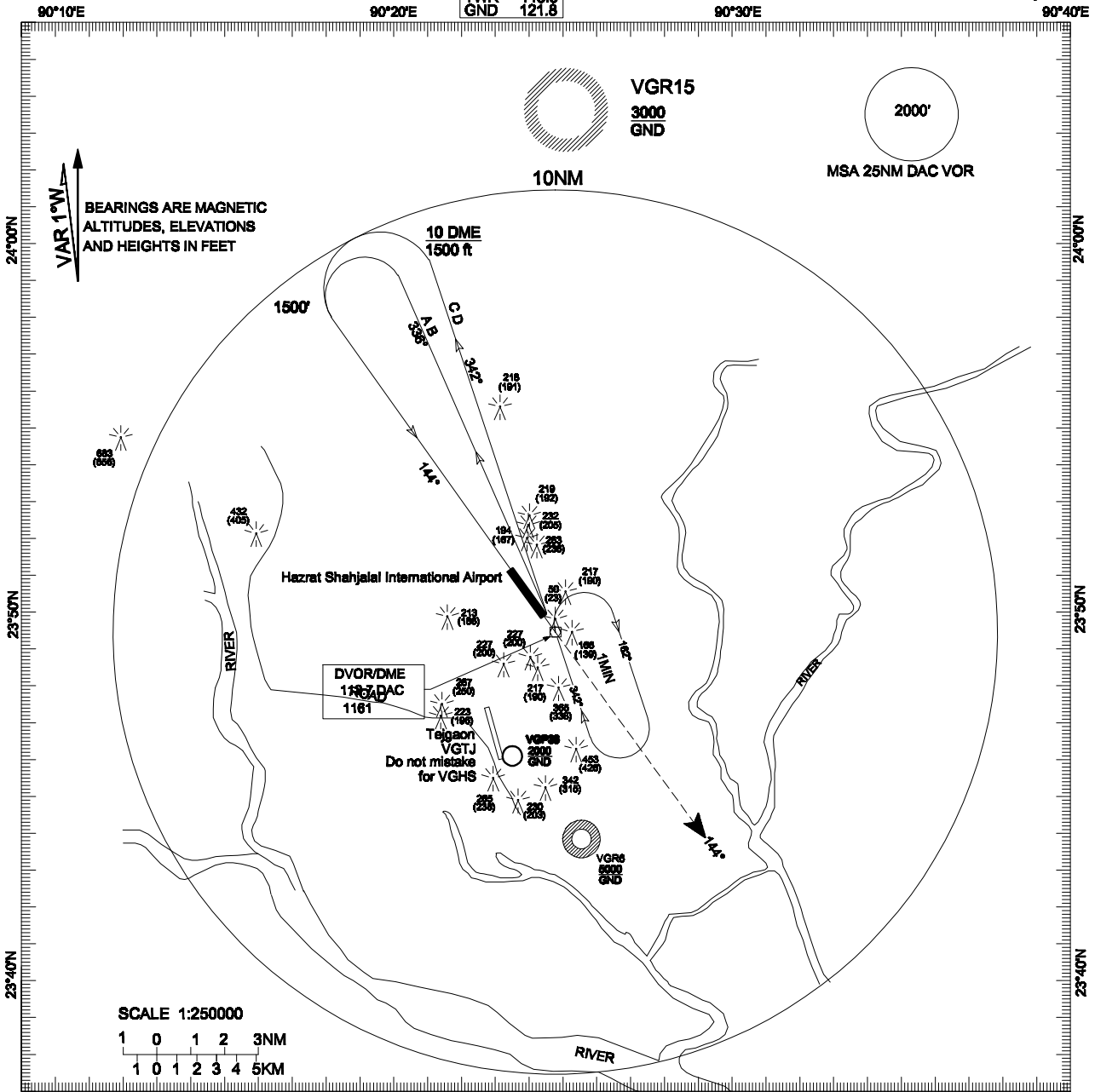
**VGHS AD 2-25
07 DEC 2017**

**INSTRUMENT
APPROACH CHART
CHART-CAO**

**ELEV 27 FT
HEIGHTS RELATED
TO AD ELEV**

ATIS 127.4
ACC(U) 125.7
ACC(L) 126.7
APP 121.3
TWR 118.3
GND 121.8

**DHAKA, BANGLADESH
HAZRAT SHAHJALAL INTERNATIONAL AIRPORT
VOR/DME Rwy 14**



MET MINIMA	10 9 8 7 6 5 4 3 2 1 0 1 2 3 4 5 6 7 8 NM															
VIS 2800m																
CATEGORY OF ACFT	A	B	C	D												
OCA	430	430	430	430												

**AIP
BANGLADESH**

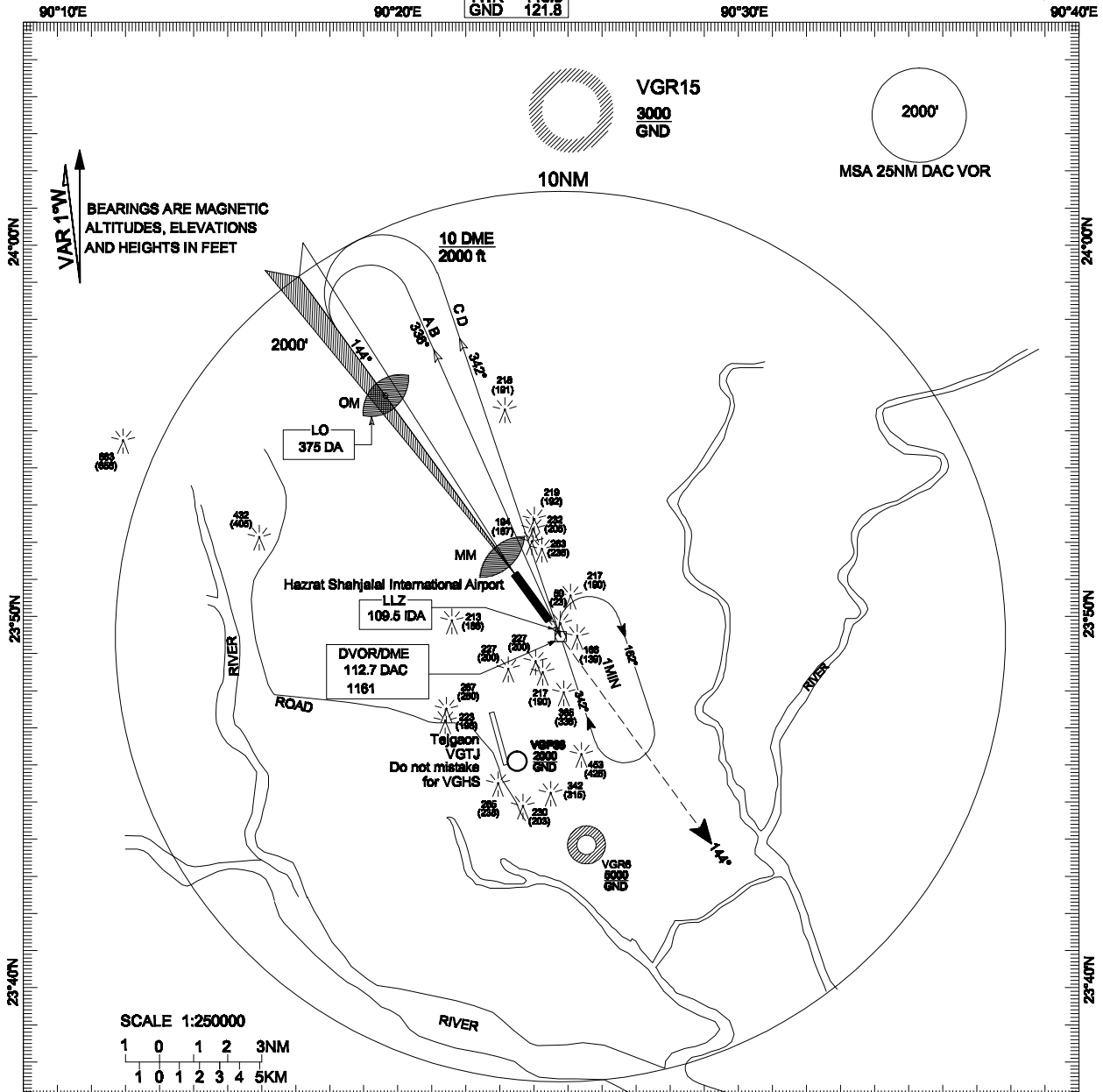
**VGHS AD 2-27
07 DEC 2017**

**INSTRUMENT
APPROACH CHART
CHART-ICAO**

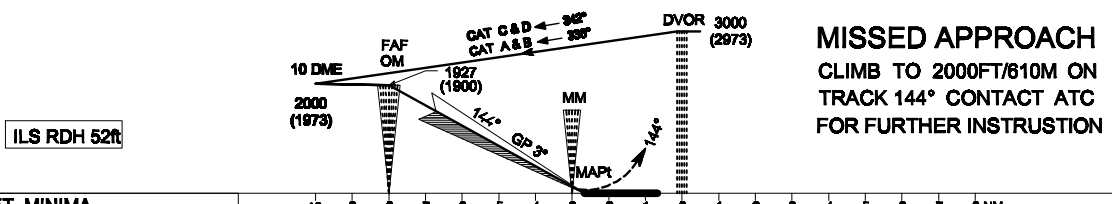
**ELEV 27 FT
HEIGHTS RELATED
TO AD ELEV**

**ATIS 127.4
ACC(U) 125.7
ACC(L) 126.7
APP 121.3
TWR 118.3
GND 121.8**

**DHAKA, BANGLADESH
HAZRAT SHAHJALAL INTERNATIONAL AIRPORT
VOR DME ILS Rwy 14**



90°10'E 90°20'E 90°30'E 90°40'E
TRANSITION LEVEL FL 080
TRANSITION ALTITUDE 4000FT



MET MINIMA
FULL: 800m, RVR-600m
ALS OUT: - 1400m
GP OUT: - 2000m (CAT A, B)
& 2800m (CAT C, D, E)

CATEGORY ACFT		A	B	C	D
OCA	Full	230	240	250	261
	GP out	350	350	350	350

CAT	A	B	C	D
SPEED	Knots 90	120	150	180
Rate of descent/GP	Ft/min 480	635	795	955
OM to THR 14 5.8 NM	Minutes 3:52	2:54	2:19	1:56

AIP
BANGLADESH

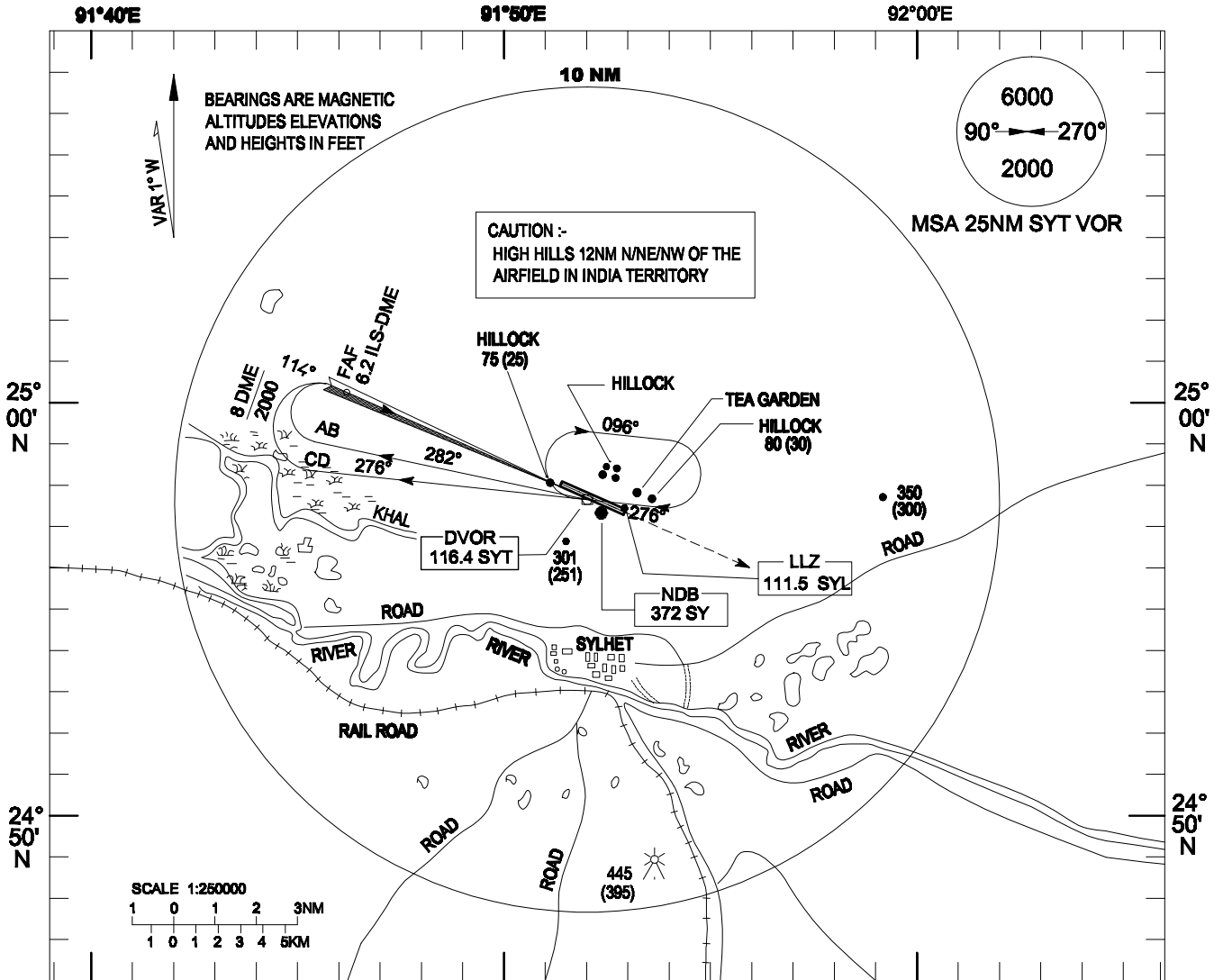
VGSY AD 2 - 19
07 DEC 2017

INSTRUMENT APPROACH
CHART- ICAO

ELEV 50FT
HEI HGTS RELATED
TO AD ELEV

TWR 122.9(PRI)
122.5(Stand by)

SYLHET, BANGLADESH
OSMANI INTERNATIONAL
VOR/ILS/DME RWY 11

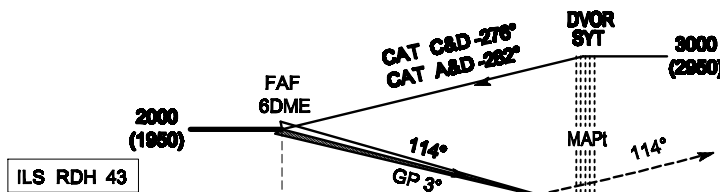


91°40'E 91°50'E 92°00'E

TRANSITION LEVEL FL 060
TRANSITION ALTITUDE 4000FT

MISSED APPROACH

CLIMB TO 2000FT / 610m ON
TRACK 114° CONTACT ATC
FOR FURTHER INSTRUCTION



TO THR 11(NM) 8 7 6 5 4 3 2 1 0 1 2 3 4 5 NM

TO ILS-DME 8 7 6 5 4 3 2 1 0 1 2 3 4 5 NM

CATEGORY OF ACFT	CAT									
	A	B	C	D						
OCA	FULL	230	240	250	260					
	GP OUT	350	350	350	350					
SPEED	KNOTS				90	120	150	260		
RATE OF DESCENT/GS	FT/MIN				480	635	795	950		
DISTANCE	6 DME	5 DME	4DME	3DME	2 DME	1 DME	FAF TO THR11			
MIN:S							3:54	2:55	2:20	1:57
ALTITUDE (HEIGHT)							FULL	VIS: 800m, RVR: 800m		
							ALS OUT	VIS: 1400m		
							GP OUT	2000m(CAT A,B) & 2800m(CAT C,D)		
						MET MINIMA (m)				

AIP
BANGLADESH

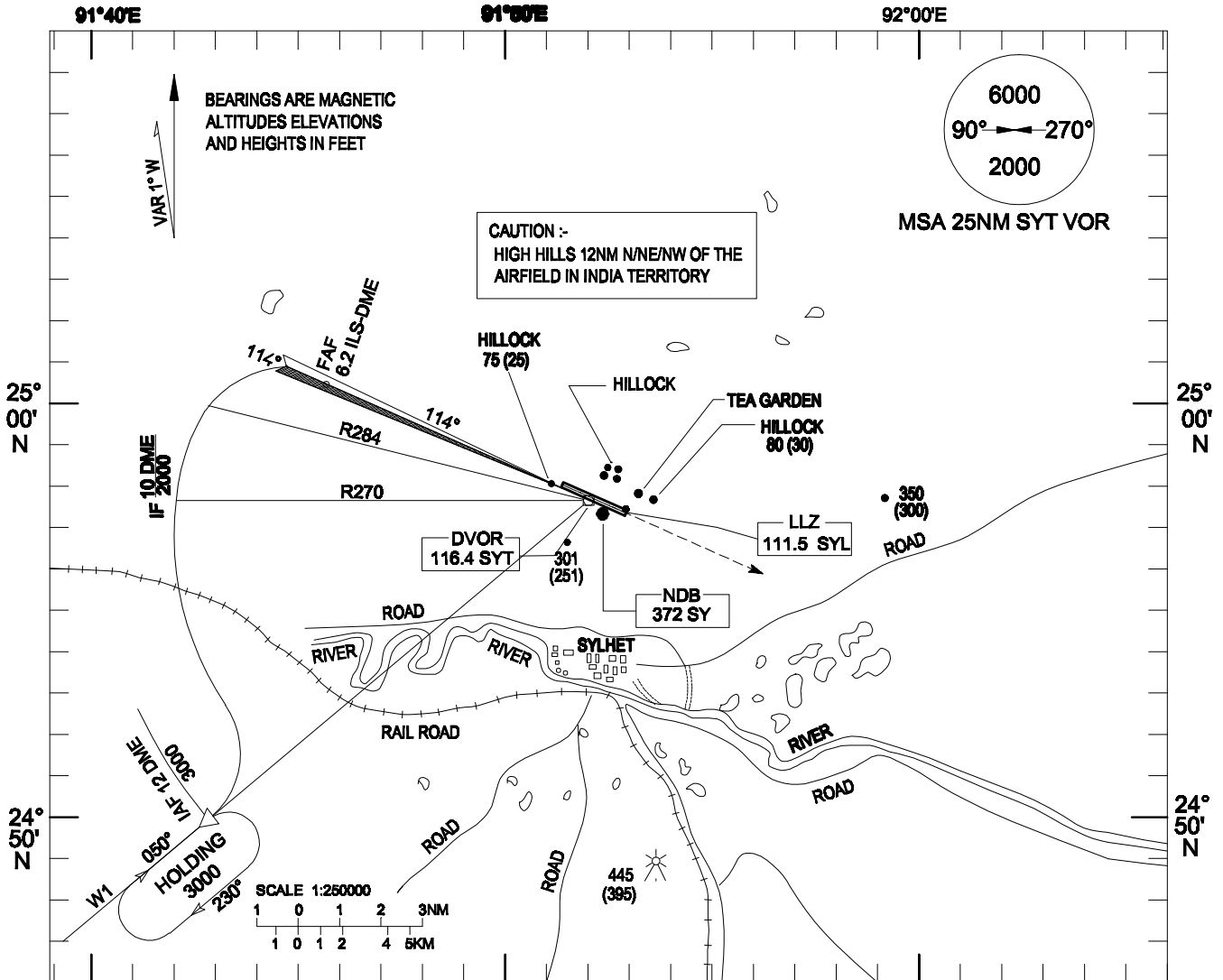
VGSY AD 2 - 21
07 DEC 2017

INSTRUMENT APPROACH
CHART- ICAO

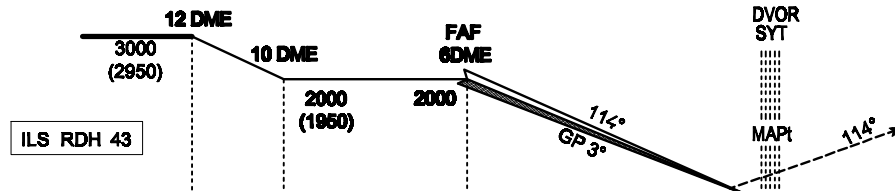
ELEV 50FT
HEIHGTS RELATED
TO AD ELEV

TWR 122.9(PRI)
122.5(Stand by)

SYLHET, BANGLADESH
OSMANI INTERNATIONAL
VOR/ILS/DME-ARC RWY 11



TRANSITION LEVEL FL 060
TRANSITION ALTITUDE 4000FT



TO THR 11(NM) 12NM 11 10 9 8 7 6 5 4 3 2 1 0 1 2 3 4 5 NM
TO ILS-DME 8 7 6 5 4 3 2 1 0 1 2 3 4 5 NM

CATEGORY OF ACFT		A	B	C	D	CAT							
OCA	FULL	230	240	250	260	A B C D							
	GP OUT	350	350	350	350	90 120 150 260							
RATE OF DESCENT/GS		FT/MIN		480 635 795 950									
DISTANCE		6 DME	5 DME	4DME	3DME	2 DME	1 DME	FAF TO THR11					
ALTITUDE		2000	1685	1366	1048	730	411	MIN:S 3:54 2:55 2:20 1:57					
(HEIGHT)		(1950)	(1635)	(1316)	(998)	(680)	(361)	MET MINIMA (m)		FULL VIS: 800m, RVR: 800m			
		ALS OUT		VIS: 1400m				GP OUT					
				2000m(CAT A,B) & 2800m(CAT C,D)									

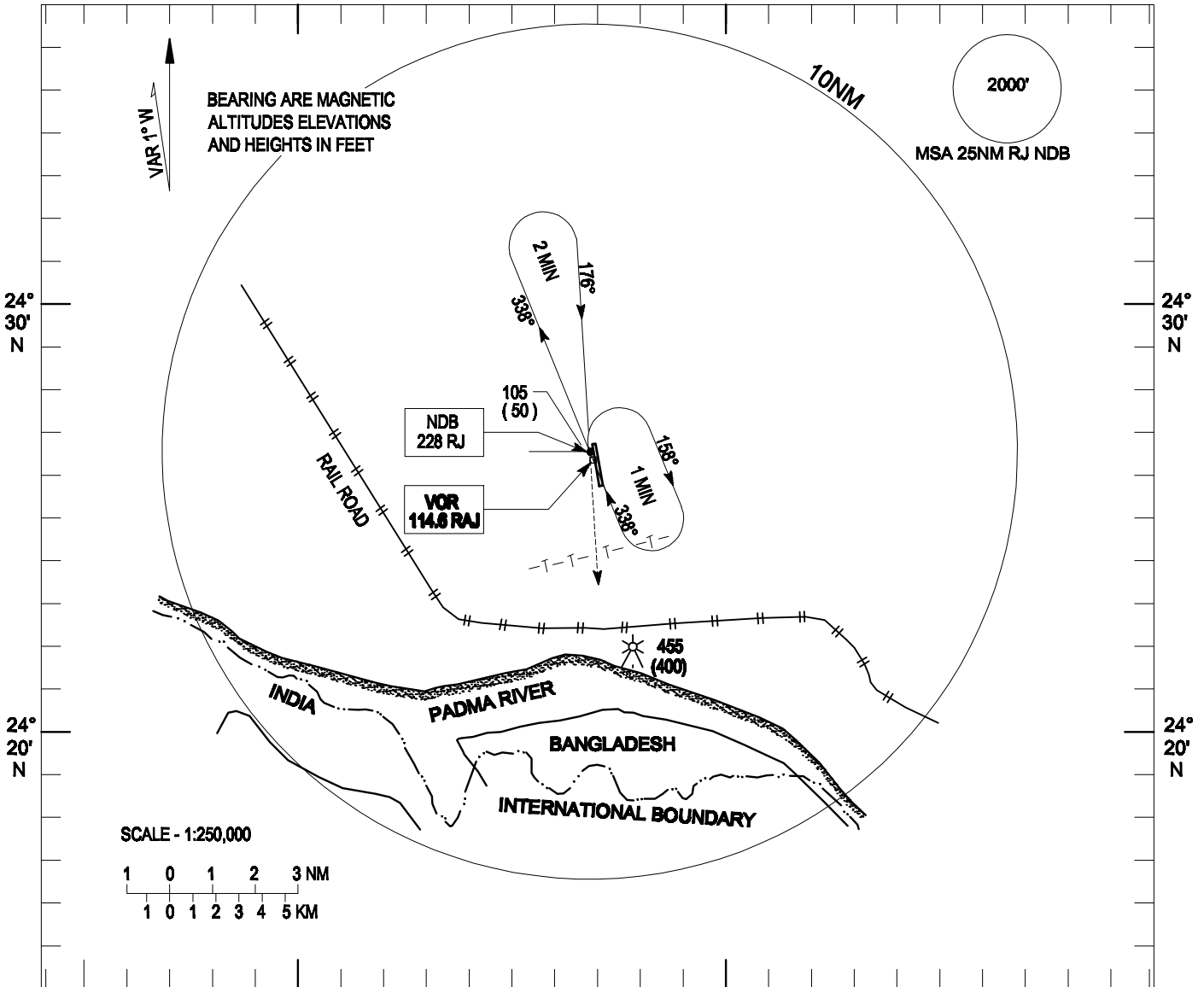
INSTRUMENT
APPROACH
CHART- ICAO

ELEV 55FT
HEIGHTS RELATED
TO AD ELEV
88°30'E

TWR 128.3

RAJSHAHI, BANGLADESH
SHAH MOKHDUM
NDB RWY 17

88°40'E



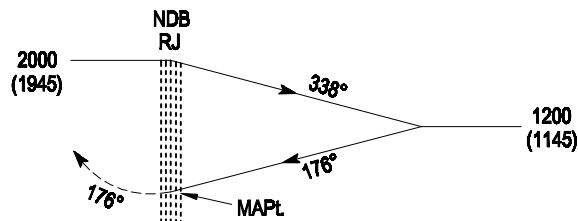
88°30'E

88°40'E

TRANSITION LEVEL FL 060
TRANSITION ALTITUDE 4000FT

PROCEDURES BASED ON TAS 150 KT (STILL AIR)

MISSED APPROACH
CLIMB TO 2000FT / 610M ON
TURNING LEFT AND CONTACT
RAJSHAHI TOWER



ELEV 55FT

MET MINIMA
VIS 2800 m

4 NM 3 2 1 0 1 2 3 4 5 NM

CATEGORY OF ACFT	A	B	C	D
OCA	450	450	450	

NOTE : INTERNATIONAL BOUNDARY APPROXIMATELY
7 NM SOUTH OF THE AIRFIELD AIRCRAFT TO
REMAIN WITHIN BANGLADESH TERRITORY

AIP
BANGLADESH

VGBR AD 2-9
07 DEC 2017

INSTRUMENT ELEV 10 FT
APPROACH HEIGHTS RELATED
CHART-ICAO TO AD ELEV

MSA 25 NM
FROM NDB BL

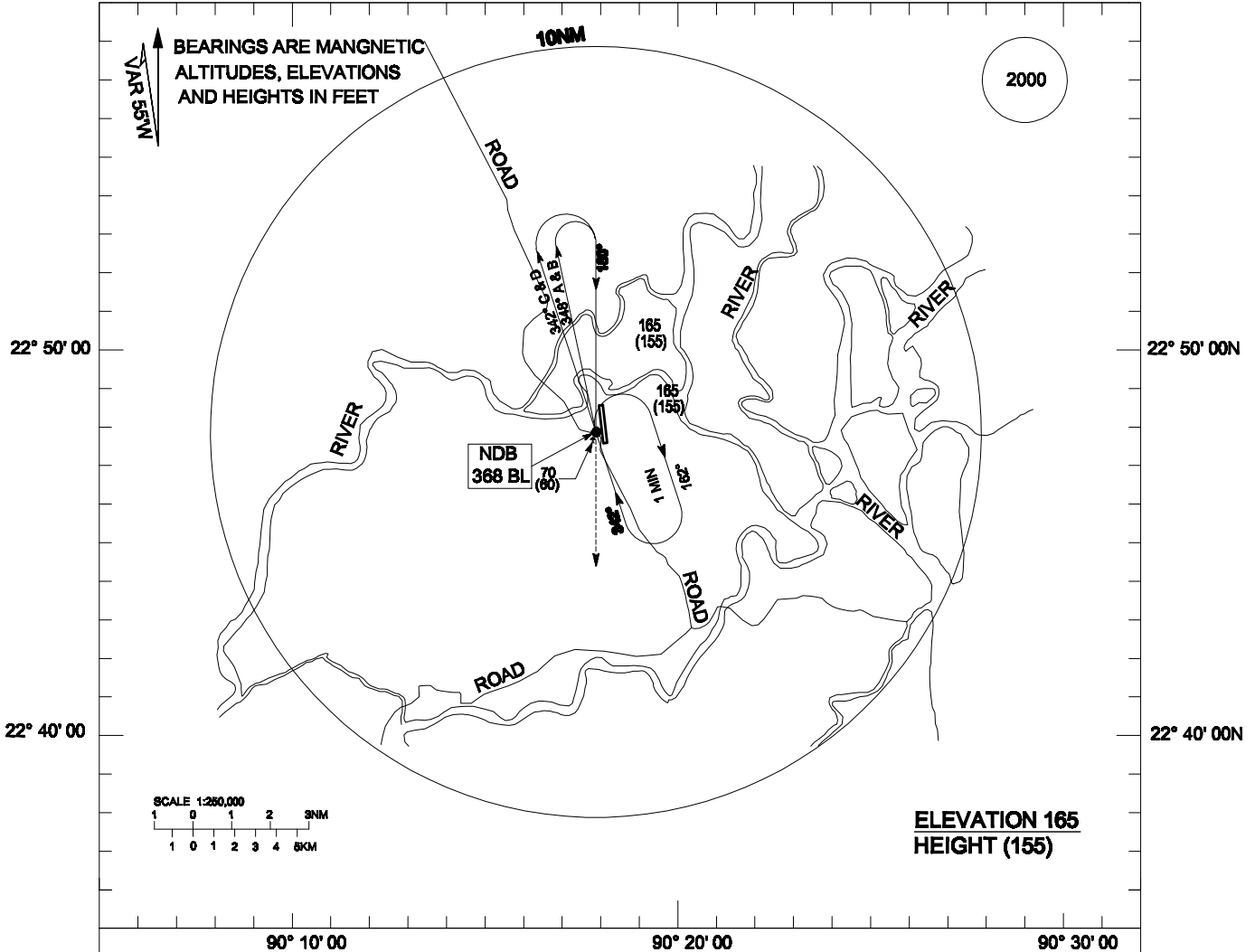
TWR 128.1
Stand by 129.3

BARISAL, BANGLADESH
BARISAL
NDB RWY 17

90° 10' 00E

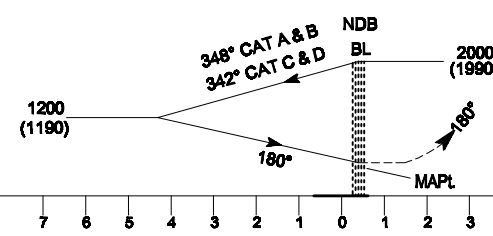
90° 20' 00E

90° 30' 00E



TRANSITION LEVEL FL 060
TRANSITION ALTITUDE 4000FT

START TURN AT
CAT A & B : 3 MIN
CAT C & D : 2 MIN



MISSED APPROACH
CLIMB TO 2000 FT/610 m ON
TRACK 180° AND CONTACT ATC
FOR FURTHER INSTRUCTION

ELEV 10 FT		7	6	5	4	3	2	1	0	1	2	3	4	5	6	7	8	NM
------------	--	---	---	---	---	---	---	---	---	---	---	---	---	---	---	---	---	----

CATEGORY OF ACET		A	B	C	D
OCA (OCH)		500(490)	500(490)	500(490)	500(490)
SPEED	KNOTS	<91	91-120	121-140	141-165
MET MINIMA	VIS (m)	2000	2400	2800	2800